

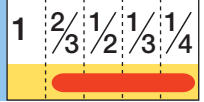


**For Security
Vari-Focal**

MP⁺
MEGA
PIXELS

DV-10x80 FALCON EYE

Applicable camera (model)



VARI
Vari-Focal

TELE
Telephoto
Long Focal

3 Mega
For Megapixel
Camera

**Day~
Night**
Day & Night

DC
DC Auto Iris

C-mt
C Mount

METAL
Metal Mount

ND
ND Filter

230
Long Cable

AT
Aspherical Lens

F1.6
Wide Aperture Rate

RoHS
RoHS Compliant

10x



- High image-quality surveillance with optical performance supporting 3 megapixels.
- Chromatic aberration is reduced to the limit by utilizing advanced design engineering and special optic glass.
- Best suited for high performance Day and Night cameras.
- Advanced surveillance is possible in combination with 1/2" cameras seeking high performance.
- Broad range of f8mm-80mm, supporting various applications including long range surveillance.
- Wide aperture of F1.6, best suited for surveillance in dark places.
- Advanced design engineering and high accuracy aspheric lens adopted, achieving a clear image up to the periphery.

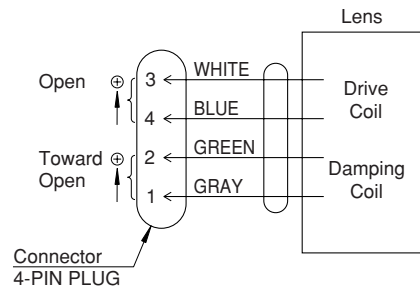
MEGAPIXEL VARI-FOCAL LENSES

| | | | |
|---|-------|----------------------------------|-----------------|
| Focal Length (mm) | | 8~80 (10x) | |
| Iris Range | | F1.6 ~ T360 (Equivalent to F360) | |
| Operation | Zoom | Manual | |
| | Focus | Manual | |
| | Iris | Auto (DC Type) (*1) | |
| Angle Of View (H×V) | 1/2" | WIDE | 44°33' × 34°58' |
| | | TELE | 4°42' × 3°32' |
| | 1/3" | WIDE | 34°58' × 26°35' |
| | | TELE | 3°32' × 2°39' |
| | 1/4" | WIDE | 22°40' × 17°06' |
| | | TELE | 2°22' × 1°47' |
| Angle Of View (H×V) Aspect Ratio 16:9 | 1/2" | WIDE | 49°39' × 29°10' |
| | | TELE | 5°07' × 2°53' |
| | 1/3" | WIDE | 38°16' × 22°05' |
| | | TELE | 3°50' × 2°09' |
| | 1/4" | WIDE | 24°42' × 14°03' |
| | | TELE | 2°35' × 1°27' |
| Focusing Range (From Front Of The Lens) (m) | | ∞ ~ 1.5 | |
| Object Dimensions at M.O.D. (H×V) (mm) | 1/2" | WIDE | 1285 × 964 |
| | | TELE | 141 × 105 |
| | 1/3" | WIDE | 964 × 723 |
| | | TELE | 105 × 76 |
| Object Dimensions at M.O.D. (H×V) (mm) Aspect Ratio 16:9 | 1/2" | WIDE | 1417 × 797 |
| | | TELE | 153 × 86 |
| | 1/3" | WIDE | 1063 × 598 |
| | | TELE | 115 × 65 |
| 1/4" | WIDE | 670 × 377 | |
| | TELE | 77 × 43 | |
| Back Focal Distance (in air) (mm) | | 18.19 | |
| Exit Pupil Position (From Image Plane) (mm) | | 1705 | |
| Filter Thread (mm) | | — | |
| Mount | | C | |
| Mass (g) | | TBA | |
| Coil Resistance | | Drive Coil | 190Ω |
| | | Damping Coil | 1,150Ω |
| Current Consumption | | 23mA (Max.) at DC 4V | |

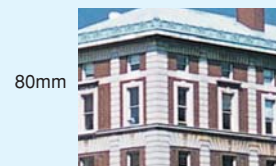
Remarks

- With Metal Mount
- (*1) When power is turned off, iris will automatically close.
- DV10X8SR4A-SA1L : Long Cable Type (230mm)

Wiring



[Lens Image]



Authorized Distributor:



PT. PACIFIC AMAN GARDA

www.pacificamangarda.com
info@pacificamangarda.com